

Master Plan Report for: **Aranda Primary School**

Architects: **Paul Barnett Design Group**

Month/Year: **December 2014**



Contents:

1. The purpose of a Master Plan Report:	2
2. The School's Vision Statement for the next 5-10 years:	2
3. School Baseline Data: (To be updated once base plans are complete)	2
4. Demographic Information:	2
5. Facility Summary: (To be updated once base plans are complete)	4
6. Summary of Assessment:	5
7. Existing Site Plan:	6
8. Proposed Building Zone Plan:	7
9. Proposed Landscape Zone Plan:	8
10. Itemised Capital Improvements:	9
11. Recommendations:	9
12. Capital Works: Work required over the next 3, 5 and 10 years.	9

1. The purpose of a Master Plan Report:

The purpose of the School Master Plan Report is to translate the Government and Directorate's objectives into school specific goals over a 10 year period.

The Report will not include the details of how each school is to achieve those goals. Those details need to be developed over time by the school community in consultation with central office.

2. The School's Vision Statement for the next 5-10 years:

Aranda Primary School's Vision is to create a school that:

- is welcoming, friendly, fun, happy and safe.
- offers a dynamic and engaging curriculum that is future focussed and meets the needs of each student and those of our community.
- is well resourced with excellent staff, facilities, equipment and technology.
- is aesthetically pleasing and environmentally sustainable.

3. School Baseline Data: (To be updated once base plans are complete)

School: Aranda Primary School	Network: Belconnen	Years: k-6
Block: 2 Section: 1	Block Size: 32567m²	Year Built: 1969 New Works to Date:
Building Footprint (m ²):	Cleaning Area:	Oval Size:

4. Demographic Information:

Socio Economic Structure (Description of PEA):

In 2014, the PEA for Aranda Primary School is Aranda, Bruce (shared with Macquarie and Maribyrnong Primary School) and Cook (shared with Macquarie Primary School).

In 2015, the PEA will be Aranda, Bruce (shared with Maribyrnong Primary School) and Cook (shared with Macquarie Primary School).

For more information about PEA see:

http://www.det.act.gov.au/school_education/enrolling_in_an_act_public_school/priority_placement_areas.

Educational Pathway by PEA (2014):

Suburb	Early Childhood School	Primary School	High School	College
Aranda	Southern Cross ECS	Aranda Primary School	Canberra High School	UC Senior Secondary College Lake Ginninderra
Bruce	Southern Cross ECS	Aranda, Macquarie or Maribyrnong Primary School	Canberra High School	UC Senior Secondary College Lake Ginninderra
Cook	Southern Cross ECS	Aranda or Macquarie Primary School	Canberra High School	UC Senior Secondary College Lake Ginninderra

Birth Rates of PEA (source: ACT Office of Regulatory Services)

Suburb	2009	2010	2011	2012	2013
Aranda	34	25	33	29	19
Bruce	55	79	72	80	83
Cook	39	39	47	34	34
Total	128	143	152	143	136

Student Enrolment Actual: February Census

2010		2011		2012		2013		2014	
P	K-6	P	K-6	P	K-6	P	K-6	P	K-6
69	404	88	416	72	451	80	453	81	463

For more information about Census, see

http://www.det.act.gov.au/publications_and_policies/publications_a-z/census

Enrolment breakdown (No's in area, No's out of Area and where from):

In February 2014 (Census of Schools)

In area: 78.7% of total school population

Out of area: 21.2% of total school population

Out of Area other Belconnen suburbs: 15.8% of total school population

Out of Area Gungahlin: 4.9% of total school population

Out of Area Inner North: 0.1% of total school population

Out of Area NSW: 0.3% of total school population

P-6 Students living in PEA (February 2014)

Total students P-6: 892

Attending public schools: 646 (72.4%)

Attending non government schools: 246 (27.5%)

Attending Aranda Primary School: 542 (60.7%)

Market Share of PEA suburbs:

Suburb	2010		2011		2012		2013		2014	
	Public	NG	Public	NG	Public	NG	Public	NG	Public	NG
Aranda	87%	13%	91%	9%	96%	4%	87%	13%	69%	31%
Bruce	63%	37%	75%	25%	81%	19%	69%	31%	56%	44%
Cook	84%	16%	84%	16%	79%	21%	82%	18%	72%	28%

5 Year Enrolment Projections (Internal ETD):

	Preschool	K	1	2	3	4	5	6	Total
2014 (actual)	81	81	66	82	53	65	67	49	544
2015	75	85	83	63	76	56	64	69	571
2016	88	90	78	80	51	69	52	59	567
2017	88	79	96	77	72	51	68	47	578
2018	88	79	78	92	65	69	51	62	584
2019	88	79	79	75	78	65	60	46	570

Students born in area enrolling in area (Dates and previous 5yr data/5yr projection):

DATA UNAVAILABLE

Percentage of transfer of local area births:	Pre:	Pre – K:	K-6:	6 – 7:
--	------	----------	------	--------

Greenfield and Urban Development Opportunities in PEA (ACT Indicative Land Release Program 2014-15 to 2017-18): Residential Land Release

Suburb	2014-15	2015-16	2016-17	2017-18
Aranda	Nil	Nil	Nil	Nil
Bruce	Nil	Nil	Nil	Nil
Cook	Nil	Nil	Nil	Nil

For more information about the Land Release Program see

<http://www.economicdevelopment.act.gov.au/buy-land-and-build/land>

5. Facility Summary: (To be updated once base plans are complete)

General Classrooms:	Number:	Size:
Administration Area:	Rooms:	
School Hall:	Size:	Condition Rating:
Specialty Areas:		
Canteen:	Size:	Condition Rating:
External Play Areas – Condition of Play Equipment/Sports Facility:		
Car Parking:	On Site:	Off Site:
Ride to school Facilities:		
Disability Access Assessment:		
Safety and Security Report:		
Sustainability Initiatives:		
Hazardous Materials Summary:		
Cultural Notes:		
Heritage Listing:	Yes/No: No	If Yes – Details:

6. Summary of Assessment:

Zones: Z1 LZ12, LZ13 and LZ17: Hall Refurbishment and Relocation of the Canteen

- The current Hall and Gymnasium are situated at the heart of the School, separated by the Canteen.
- Due growth in numbers of the School's students, community and Afters program, the Hall is now too small for its purpose and unable to accommodate the high demand and multiple requirements of use.
- It is recommended that this Zone, which includes the outdoor areas adjoining, be refurbished within the next 3 years as it can no longer function in its current state.
- Recommendations include: Relocation and refurbishment of the Canteen, Expansion of the Hall and Outdoor areas be converted to adventure playground and veggie/herb gardens for use in the canteen and future Kitchen garden programs which is in line with the school's vision.

Zones: Z2, Z3, Z6 and Z7 : Classrooms and School Pedegogy Consolidation

- Aranda Primary School caters for a range of classes and students, including music groups and instrument practice, English as a Second Language, sports, art and other programs.
- In a recent refurbishment, the 5/6 classrooms were opened up and given operable walls to create a flexibility of teaching/learning spaces, which has been incredibly successful.
- The increase in students has meant that some individual and small group programs will not be able to operate. In particular the ESL program no longer has a space allocated, which is of great concern to the school and community as this program may now be discontinued.
- It is recommended that the classrooms in Zone 2 be opened up, similar to that of the 5/6 area. This would allow the School to be flexible in its classroom sizes and uses, and allow for the continued growth of a diverse range of programs and student needs.
- This recommendation is in line with the School's pedagogical framework, which supports the individual needs of students in large and small class groups, a connection to indoor and outdoor areas in a variety of classes and special programs, and a flexible learning space for teachers and students.

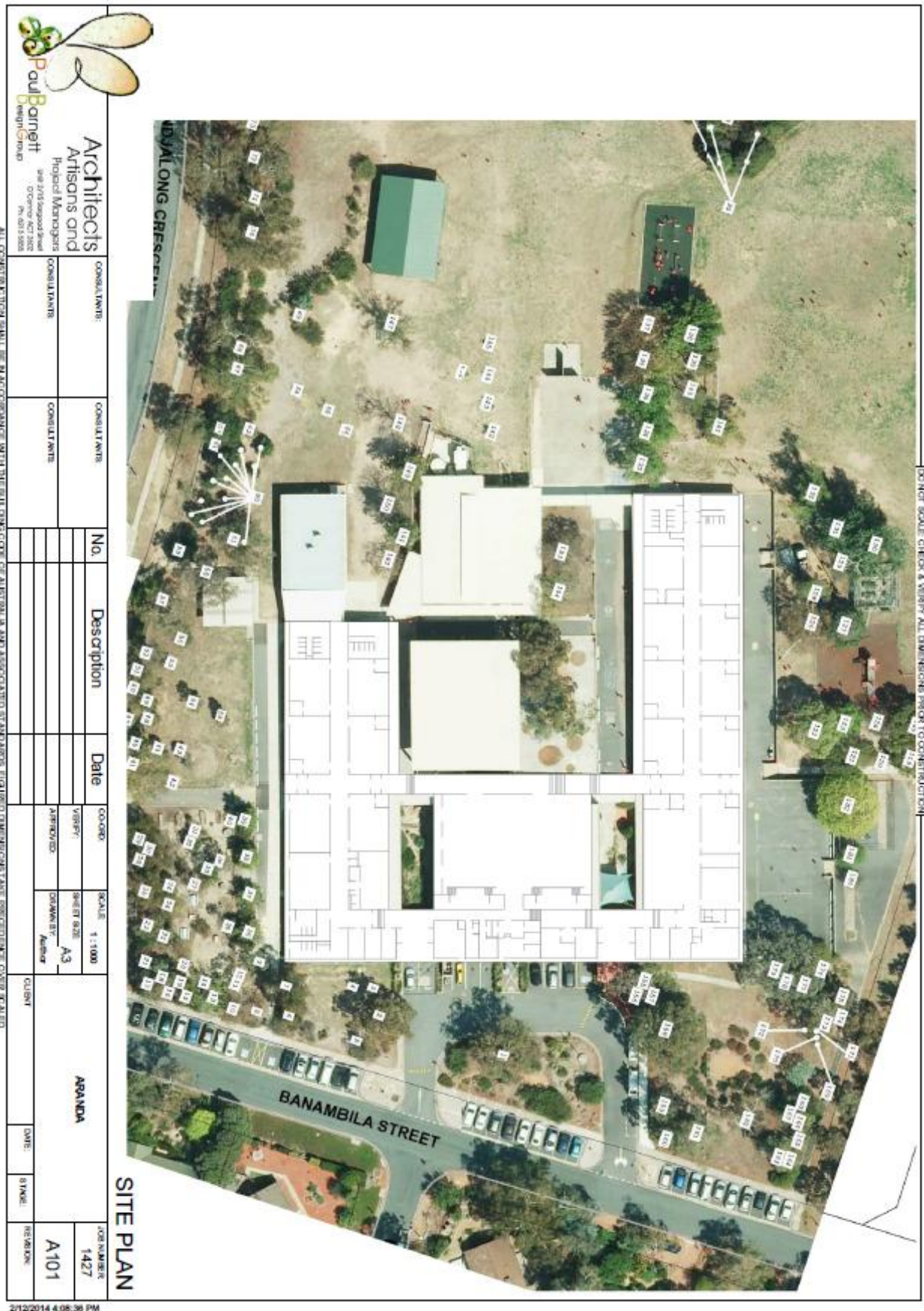
Zones Z9, Z10, Z11, LZ1, LZ2 and LZ11: School Entry and Landscape Frontage

- The main entry to the school is located on Banambila st, with a small drop off loop and carpark. This area has become a serious concern for staff, parents and the community as it is often congested and dangerous for students and pedestrians at peak times.
- It is recommended that the services on this side of the building be concealed, that the entry and landscape frontage be upgraded to better direct visitors and to slow the traffic flow in this area. This recommendation would be a minimum response to the issue.

All Landscape Zones: Landscape Journeys and Outdoor Areas Generally

- Currently, Aranda Primary can be accessed from several points around the school, some of which have formed organically as natural foot and bike paths.
- There are long term plans for Aranda to start a bike program which will include a bike shed with 15 bikes, and it is recommended more deliberate and safe bike paths be considered for the future of Aranda's outdoor areas generally and their connection to the wider suburb.
- It is also recommended that outdoor areas be water harvested generally, which can be fed primarily from roof water, and that gardens and play areas be created outside and connected to each classroom.

7. Existing Site Plan:



8. Proposed Building Zone Plan:

9. Proposed Landscape Zone Plan:



10. Itemised Capital Improvements:

Scope:	
Priority:	
Cost Analysis:	

11. Recommendations:

Capacity:	
Re-Utilisation:	

12. Capital Works: Work required over the next 3, 5 and 10 years.

Minor Works required next 3 Years:	<ol style="list-style-type: none"> 1. Redevelopment and refurbishment of the School Hall 2. Landscape Journeys and Outdoor areas generally.
Redesign required next 5 Years:	<ol style="list-style-type: none"> 3. School Entry and Landscape Frontage Upgrade 4. Classroom refurbishments
Signed:	Date: